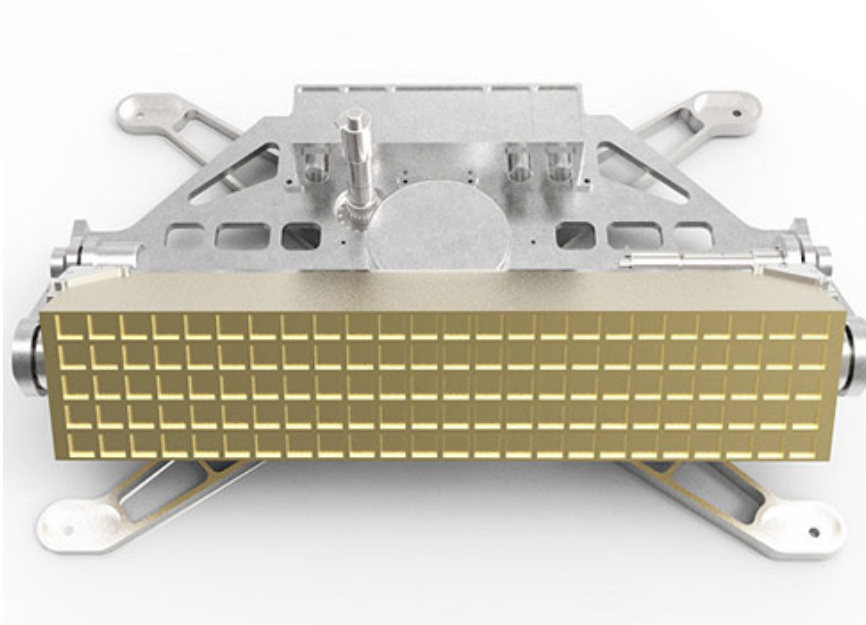


## JSUT450-0.45m ku band Airborne VSAT Antenna



### Antenna JSUT450

La antena JSUT450 utiliza dos modos de seguimiento estabilizado axialmente, integrado en un sistema de fusión de medición de actitud GNSS / INS, por lo tanto, para asegurarse de que la antena siempre apunta al satélite en el movimiento.

### Features:

Dimension(Diameter x Height)	950mm x 279mm	
Weight	50kg	
Frequency Range	Rx	10.70~12.75GHz
	Tx	13.75~14.50GHz
AMIP selectable by A791	VP/HP	
Receive G/T (Pitch 10°)	11.6 dB/K @ 11.85GHz	
Transmit EIRP (dBW)	49.3dBW @14.25GHz	
Cross poll isolation	> 25dB(TYP)	
RF Input(Tx)	13.75~14.5GHz, WR62	
RF Output(Rx)	950~2150MHz, TNC 50Ω	
Power consumption	120w	
Azimuth range	360° continuous rotation	
Elevation Range	0° ~ 90° (80° Performance reach the standard)	
Az/EI Velocity: Acceleration	>60° /s; >100° /s²	
Tracking accuracy	≥0.2° RMS	
DC Power	28VDC	
Operating Temperature	-55°C to +70°C	
Altitude	16800 Meters (55000Feet)	
comply with the standard	ARINC 791-P1 RTCA DO-160G	ARINC 791-P2 RTCA DO-178

### JSUT450-0.3m ku band Airborne VSAT Antenna

Con la antena JSUT450 aplique comunicación Tx / Rx, con un equipo de peso ligero y volumen pequeño.

**Aplicaciones:** Helicóptero, avión civil y otros aviones.

### SATCOM IN THE MOVE

@Land @Maritime @Airborne

## Antenna JSUT450

## Especificaciones :

### Electronic specification

Antenna Type	Panel waveguide horn array
Operation Frequency	Rx: 10.95~12.75GHz;Tx: 14.00~14.50GHz
Antenna Gain	Rx: $\geq 32.52\text{dBi}@12.50\text{GHz}$ Tx: $\geq 34.0\text{dBi}@14.25\text{GHz}$
Polarization Mode	Linear
Port Isolation	$\geq 85\text{dB}$ (filter is included)

### Mechanical specification

Size	930*279mm(diameter*height)
Weight	50kg
Turntable rotate range	Azimuth: 360°continuous Elevation: 0°~90°
Motion carrier attitude	Roll: $\pm 30^\circ$ , 8s period Pitch: $\pm 30^\circ$ , 8s period Yaw: 40°/s
Polarization mode	Auto tracking

### Antenna tracking specification

Stabilization	2-axis stable tracking
Tracking Mode	INS measurement and signal tracking(beacon and carrier)
Tracking Accuracy	$\leq 0.2^\circ\text{RMS}$
Initial operating time	10s
Re-acquisition time	1s

### Other requirements

Power supply	AC115V 400Hz
Interface requirements	Power interface, network interface(RJ45), debugging interface(RS 422)
Standard consumption	60W(without BUC)
Operation temperature	-55°C~70°C
Relative humidity	5%~95%
Wind load	Better than 55m/s
Three proofing	Moisture proofing, salt spay proofing and fungus proofing